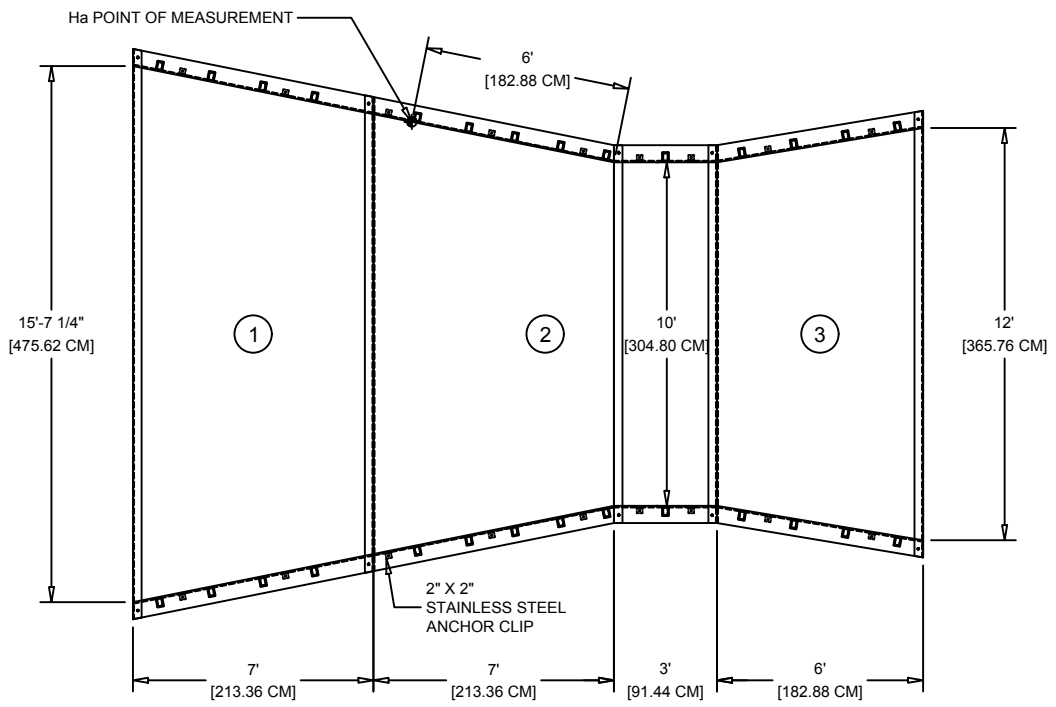
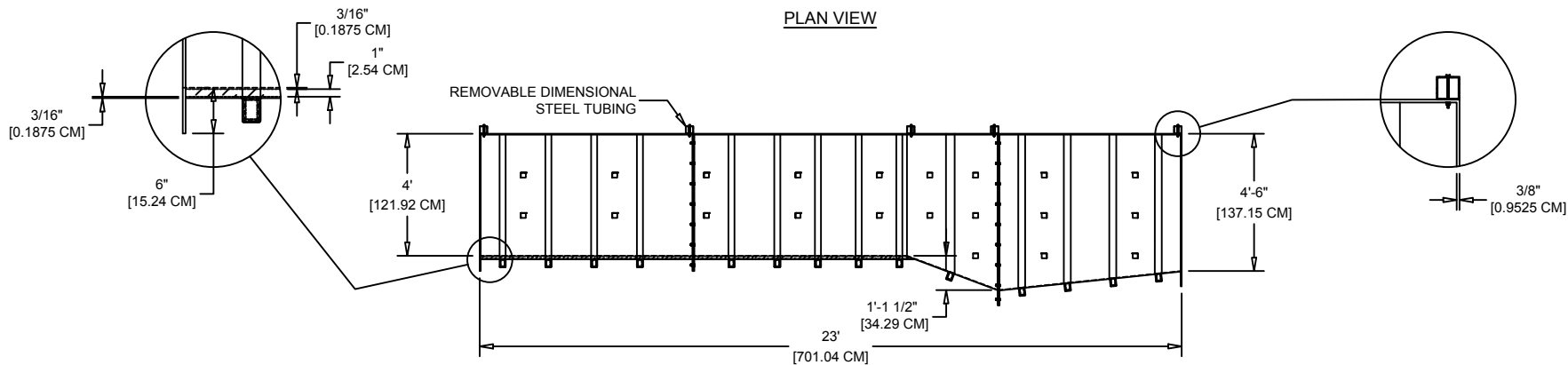


FREE-FLOW CAPACITY: 2,575 GPM [162.5 L/S] MINIMUM - 146,480 GPM [9,243 L/S] MAXIMUM

FLOW →



PLAN VIEW



ELEVATION VIEW



- NOTES:
- 1) FLOW IS FROM LEFT TO RIGHT
 - 2) TOP DIMENSIONAL STEEL TUBING 3" X 3" X 1/8" T [7.62 CM X 7.62 CM X 0.3175 CM]
 - 3) STAINLESS STEEL ANCHOR CLIPS
 - 4) MINIMUM FRP WALL LAMINATE THICKNESS IS: 3/8" [0.953 CM] WITH 30% GLASS CONTENT AND 15 MIL (MIN.) GEL COAT WITH U.V. INHIBITORS
 - 5) FLOOR CONSTRUCTION: ENCAPSULATED 1" T [2.54 CM] CORE WITH 2" X 3" X 1/4" [5.08 CM X 7.62 CM X 0.635 CM] STEEL FLOOR RIBS

This drawing and the data contained within is the sole, confidential property of OPENCHANNELFLOW (OCF) and may not be copied, reproduced, disclosed to others, in whole or in part, without the prior written consent of OCF. OCF reserves the right to change any dimension, finish, material, or method of construction indicated on this drawing at will and without notice. This drawing is provided in confidence with the understanding it shall be returned to OCF upon demand.

OPENCHANNELFLOW
BOISE | ATLANTA

DWG NO. P-F-120-N-N-N-N-N (1) DATE 5.19.15

FIBERGLASS 120" PARSHALL FLUME

Unless otherwise indicated, dimensions are in feet and inches, with centimeters indicated in []. Angles are in degrees.

