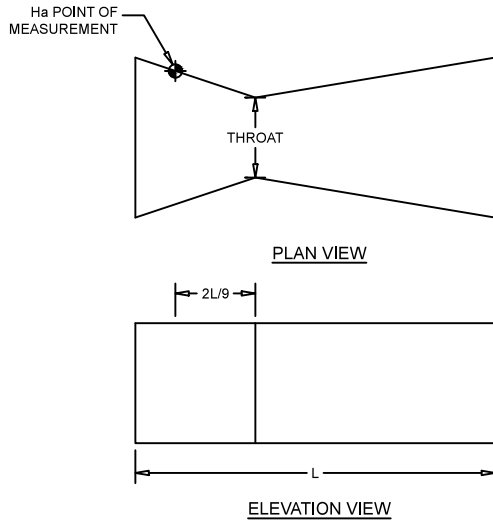


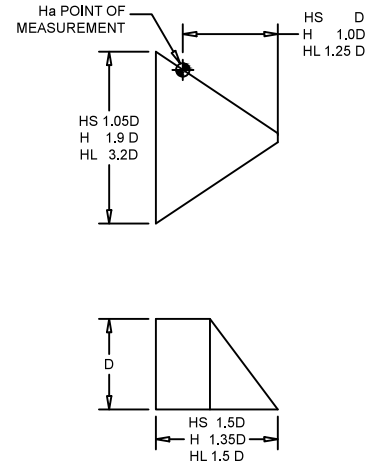
FLUME ORIENTATIONS & POINTS OF MEASUREMENT

FLOW →

CUTTHROAT FLUME

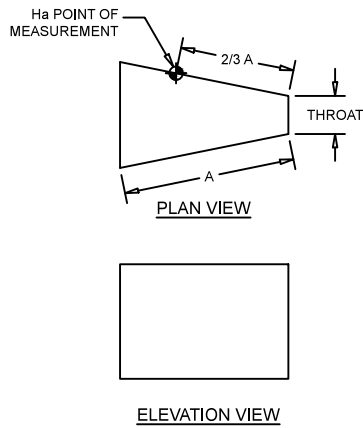


HS / H / HL FLUME



⚠ FREE-SPILLING DISCHARGE REQUIRED

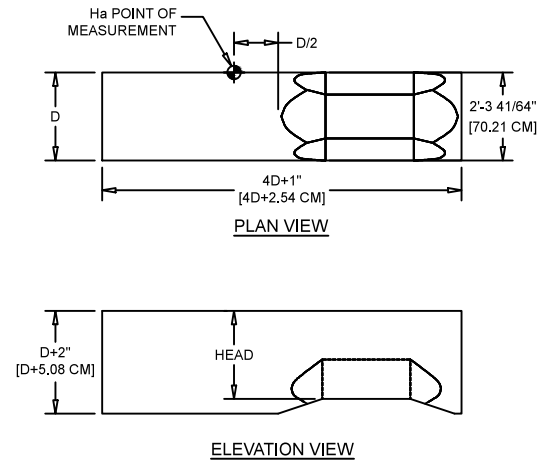
MONTANA FLUME



⚠ FREE-SPILLING DISCHARGE REQUIRED

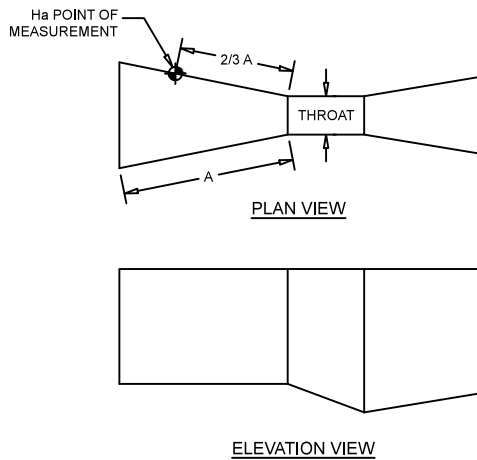
⚠ POINT OF MEASUREMENT: $2/3 A$ FOR 1"-96" SIZES, $2/3$ (THROAT/2+4' [1.22 M]) FOR 120"+ SIZES

PALMER-BOWLUS FLUME



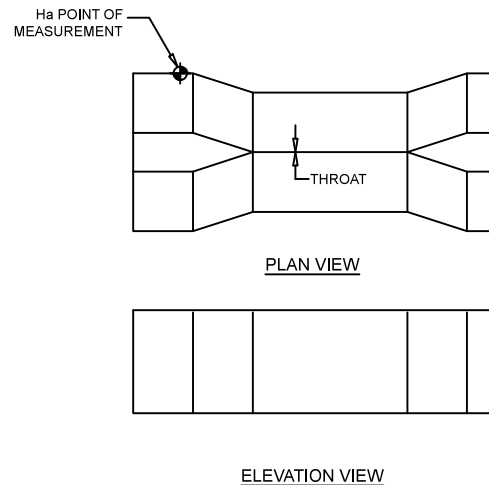
⚠ HEAD IS MEASURED FROM RAMP INVERT TO WATER SURFACE

PARSHALL FLUME



⚠ POINT OF MEASUREMENT: $2/3 A$ FOR 1"-96" SIZES, $2/3$ (THROAT/2+4' [1.22 M]) FOR 120"+ SIZES

TRAPEZOIDAL FLUME



FLOW →