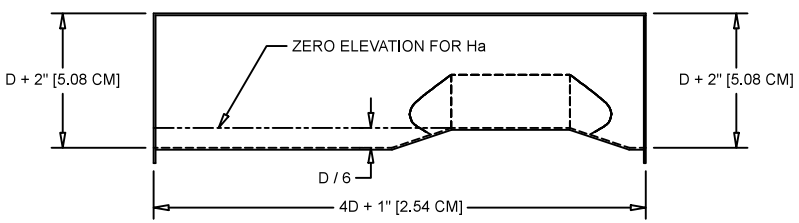


PLAN VIEW



ELEVATION VIEW

W (SIZE)	D/2	1.7 D	2 D	D + 2"	4D + 1"
4" [10.16 CM]	2" [5.08 CM]	6 51/64" [17.27 CM]	8" [20.32 CM]	6" [15.24 CM]	1'-5" [43.18 CM]
6" [15.24 CM]	3" [7.62 CM]	10 13/64" [25.91 CM]	12" [30.48 CM]	8" [20.32 CM]	2'-1" [63.5 CM]
8" [20.32 CM]	4" [10.16 CM]	1'-1 19/32" [34.54 CM]	1'-4" [40.62 CM]	10" [20.52 CM]	2'-9" [83.82 CM]
10" [25.4 CM]	5" [12.7 CM]	1'-5" [43.18 CM]	1'-8" [50.8 CM]	12" [30.48 CM]	3'-5" [104.1 CM]
12" [30.48 CM]	6" [15.24 CM]	1'-8 13/32" [51.82 CM]	2' [60.96 CM]	1'-2" [35.56 CM]	4'-1" [124.5 CM]
15" [38.1 CM]	7 1/2" [19.05 CM]	2'-1 1/2" [64.77 CM]	2'-6" [76.2 CM]	1'-5" [43.18 CM]	5'-1" [154.9 CM]
18" [45.72 CM]	9" [22.86 CM]	2'-6 19/32" [77.72 CM]	3' [91.44 CM]	1'-8" [50.8 CM]	6'-1" [185.4 CM]
21" [53.34 CM]	10 1/2" [26.67 CM]	2'-11 45/64" [90.68 CM]	3'-6" [106.68 CM]	1'-11" [58.42 CM]	7'-1" [215.9 CM]
24" [60.96 CM]	12" [30.48 CM]	3'-4 51/64" [103.63 CM]	4' [121.92 CM]	2'-2" [66.04 CM]	8'-1" [246.34 CM]

NOTES:
 1) FLOW IS FROM LEFT TO RIGHT

This drawing and the data contained within is the sole, confidential property of OPENCHANNELFLOW (OCF) and may not be copied, reproduced, disclosed to others, in whole or in part, without the prior written consent of OCF. OCF reserves the right to change any dimension on this drawing at will and without notice. This drawing is provided in confidence with the understanding it shall be returned to OCF upon demand.

OPENCHANNELFLOW
 BOISE | ATLANTA

DWG NO. PERMANENT WITH APPROACH PALMER-BOWLUS FLUME DATE 8.26.16

PERMANENT WITH APPROACH SECTION
 PALMER-BOWLUS FLUME MASTER DIMENSIONS

Unless otherwise indicated, dimensions are in feet and inches, with centimeters indicated in []. Angles are in degrees.

REV	REVISION DESCRIPTION	BY	DATE