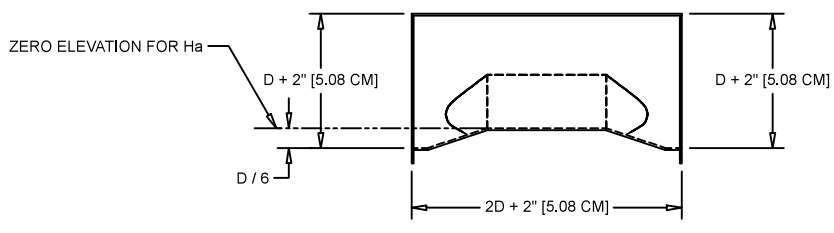


PLAN VIEW



ELEVATION VIEW

W (SIZE)	D/2	1.7 D	2 D	D + 2"	2D + 2"
4" [10.16 CM]	2" [5.08 CM]	6 51/64" [17.27 CM]	8" [20.32 CM]	6" [15.24 CM]	10" [33.02 CM]
6" [15.24 CM]	3" [7.62 CM]	10 13/64" [25.91 CM]	12" [30.48 CM]	8" [20.32 CM]	1'-2" [35.56 CM]
8" [20.32 CM]	4" [10.16 CM]	1'-1 19/32" [34.54 CM]	1'-4" [40.62 CM]	10" [20.52 CM]	1'-6" [45.72 CM]
10" [25.4 CM]	5" [12.7 CM]	1'-5" [43.18 CM]	1'-8" [50.8 CM]	12" [30.48 CM]	1'-10" [55.88 CM]
12" [30.48 CM]	6" [15.24 CM]	1'-8 13/32" [51.82 CM]	2' [60.96 CM]	1'-2" [35.56 CM]	2'-2" [66.04 CM]
15" [38.1 CM]	7 1/2" [19.05 CM]	2'-1 1/2" [64.77 CM]	2'-6" [76.2 CM]	1'-5" [43.18 CM]	2'-8" [81.28 CM]
18" [45.72 CM]	9" [22.86 CM]	2'-6 19/32" [77.72 CM]	3' [91.44 CM]	1'-8" [50.8 CM]	3'-2" [96.52 CM]
21" [53.34 CM]	10 1/2" [26.67 CM]	2'-11 45/64" [90.68 CM]	3'-6" [106.68 CM]	1'-11" [58.42 CM]	3'-8" [111.8 CM]
24" [60.96 CM]	12" [30.48 CM]	3'-4 51/64" [103.63 CM]	4' [121.92 CM]	2'-2" [66.04 CM]	4'-2" [127 CM]

NOTES:  
 1) FLOW IS FROM LEFT TO RIGHT  
 2) POINT OF MEASUREMENT IS UPSTREAM OF THE FLUME

OPENCHANNELFLOW  
 BOISE | ATLANTA  
 DWG. NO. PERMANENT W/O APPROACH PALMER-BOWLUS DATE 8.26.16

This drawing and the data contained within is the sole, confidential property of OPENCHANNELFLOW (OCF) and may not be copied, reproduced, disclosed to others, in whole or in part, without the prior written consent of OCF. OCF reserves the right to change any dimension on this drawing at will and without notice. This drawing is provided in confidence with the understanding it shall be returned to OCF upon demand.

PERMANENT W/O APPROACH PALMER-BOWLUS FLUME MASTER DIMENSIONS  
 Unless otherwise indicated, dimensions are in feet and inches, with centimeters indicated in [ ]. Angles are in degrees.

REV	REVISION DESCRIPTION	BY	DATE

